



BRIDGE RIVER VALLEY

VISITOR GUIDE

**BRALORNE, GOLD BRIDGE,
GUN, TYAUGHTON & MARSHALL LAKE**

TABLE OF CONTENTS

GETTING HERE...	4
MAP...	5
CIRCLE TOURS...	6
TOP THINGS TO DO...	8
HISTORY...	9
BRALORNE...	12
GOLD BRIDGE...	13
GUN LAKE...	14
TYAUGHTON LAKE & MARSHALL LAKE...	15
4X4 ROADS & TRAILS...	16
HIKING...	17
MOUNTAIN BIKING...	18
HORSEBACK RIDING...	20
BRALORNE TIME TRAVELER...	22
FISHING...	24
WILDLIFE VIEWING...	25
SWIMMING & BOATING...	27
AREA MAP...	28
HELI-SKIING & CATSKIING...	30
SNOWMOBILING...	32
SKI TOURING...	34
WINTER ACTIVITIES...	35
ACCOMMODATION...	36
CAMPING...	38
GROCERY / FOOD...	39
BACKCOUNTRY OPERATORS...	40
RECREATION...	42
EVENTS...	43
GAS & AUTO...	44
LOCAL SERVICES...	44
WASTE MANAGEMENT...	45
EMERGENCY SERVICES...	46

Welcome to the Bridge River Valley, Gateway to the South Chilcotins

Expansive wilderness, intriguing history and vibrant local culture await you in the Bridge River Valley. Come and explore – ride the trails, enjoy the lakes, find the perfect campsite or let one of our world-renowned adventure providers guide you and your family/friends on horseback trips, hut-to-hut alpine tours or heli-skiing experiences.

There is a unique vibe to this place – a sense of freedom anchored in a sense of belonging – independence thrives here alongside personal responsibility – to each other and to the land. Home to a hardy few, the Bridge River Valley welcomes visitors from nearby Sea to Sky and from around the world with the lure of epic adventure and the chance to learn about and share our history, our culture and our values.

We hope you take some time to discover and explore the Bridge River Valley – stay for a weekend - come back for a lifetime. In the Bridge River Valley you can live where you play. We offer affordable real estate, employment, investment and business opportunities, a child-focused community school delivering the approved public school curriculum alongside exceptional outdoor recreation programs and an opportunity to enjoy and appreciate the quality of your life with family and friends.

If you'd like more information about visiting or living in the Bridge River Valley, please call or visit www.liveplay.ca. We hope to see you on the trails or in town at a local store or restaurant.

Bridge River Valley Community Association



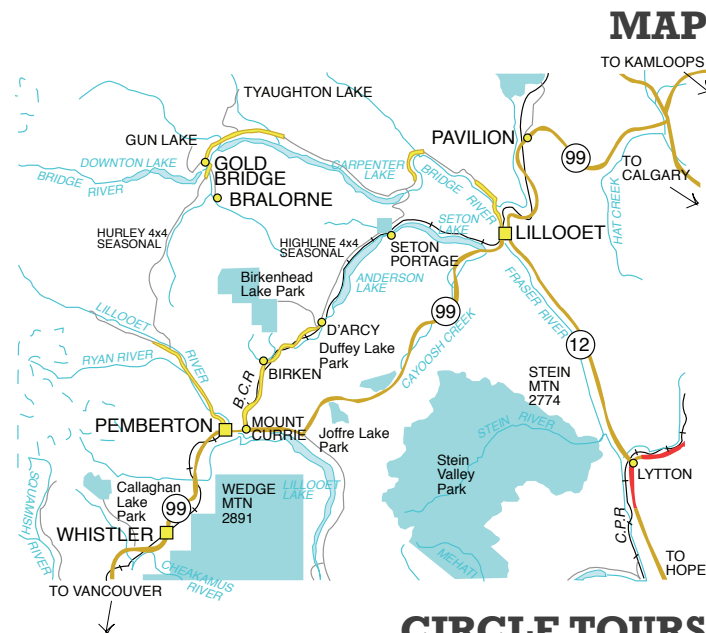
GETTING HERE

TRANSPORTATION & ROUTES

The Bridge River Valley is Vancouver's closest wilderness experience lying 300 km north of Vancouver and 100 km west of Lillooet. The Valley is accessible by car, snowmobile, floatplane and helicopter.

About four hours from Vancouver and only two hours from Whistler, the most direct route in summer (May - October) is Hwy 99 to Pemberton and across the Hurley River Forest Service Road which climbs a stunning 5,500 feet over Railroad Pass. The Hurley is a summer only 4x4 road with snowmobile access in the winter.

Hwy 99 / Duffey Lake Road to Lillooet and Route 40 to Gold Bridge is an alternate year-round route suitable for all vehicles. It is a combination of paved and gravel surfaces. This route crosses spectacular mountain terrain complete with waterfalls, wildlife viewing and takes approximately four hours from Whistler. Check road conditions on drivebc.ca and visit isurvivedthehurley.com.



CIRCLE TOURS

Add the Bridge River Valley to your grand tour!
Here are some suggested circle tours for your journey:

Route 1: Vancouver Escape

Vancouver > Hope > Fraser Canyon > Lytton > Lillooet > Bridge River Valley > Pemberton > Whistler > Vancouver

Route 2 – Whistler Escape

Whistler > Pemberton > Lillooet > Bridge River Valley > Pemberton > Whistler

Route 3 – Western Canada Grand Tour

Calgary > Banff > Golden > Kamloops > Cache Creek > Lillooet > Bridge River Valley > Pemberton > Whistler > Vancouver

More details on the following page.



CIRCLE TOURS

The Bridge River Valley is a great multi-night destination or the highlight of a circle tour from Vancouver, Calgary, Kamloops, Whistler or Lillooet – looking for a weekend getaway or planning your grand tour of Western Canada? Try one of these adventures:

Route 1: Vancouver Escape

Recommended: 4 days – minimum 3 nights – 650 km

Leave Vancouver behind along the TransCanada Highway #1 and travel through the fertile Fraser Valley – check out a farmers market or buy farm fresh local produce (circlefarmtour.com); travel to Chilliwack and check out the local museum in town (chilliwackmuseum.ca) before venturing onwards to Hope (hopebc.ca); stay the night and wake up ready for a hike in the mountains or through the Othello Tunnels. Grab a bite in town and head into the Fraser Canyon – Canada's own version of the Grand Canyon. There is hiking and historical sites along the way (goldrushtrail.ca). Hell's Gate Airtram (hellsgateairtram.com) offers a spectacular view of the gorge and rapids that have awed travellers for centuries.

Route 2 – Whistler Escape

Recommended: 2 days – minimum 1 night – 335 km

If you need a break from world-class, purpose built resort amenities and are searching for immersive and authentic wilderness and culture, the Bridge River Valley is only 2 hours away from Whistler! Venture north on Hwy 99 and if you have a 4x4 vehicle, cruise through the scenic Pemberton Meadows to the Hurley Forest Service Road – the Bridge River Valley is only 2 hours away. Other vehicles can take the equally scenic Duffey Lake Road to Lillooet/Road 40 and arrive in the Bridge River Valley in only 4 hours! When you're ready for the Whistler scene again, cruise back renewed and refreshed.

Continue along the spectacular Fraser Canyon and turn off at Lytton and make your way to Lillooet. Stay the night in Lillooet – time your journey to catch one of Lillooet's many festivals or a musical performance at historic the Miyazaki House.

Wake up refreshed and begin your journey along Road 40 – book ahead at Xwisten Experience Tours to learn about local First Nations and their tradition of dip netting and wind drying Fraser River salmon. Continue your journey along Road 40 to the Bridge River Valley and check in at one of several accommodation options listed in our guide – stay a few nights and immerse yourself in our nature, history and culture – ride or hike the trails, pan for gold at the Haylmore heritage site, go paddleboarding/boating on one of our many lakes and finish the day with a delicious meal and spa treatment. When you are ready, complete your circle tour by taking the Hurley Forest Service Road to Pemberton – Whistler – Vancouver or by returning to Lillooet on Road 40 and taking the Duffey Lake Road to Pemberton – Whistler – Vancouver.

Route 3 – Western Canada Grand Tour

Be sure to include the Bridge River Valley in your grand tour of Western Canada. Banff and Whistler are must sees but the Bridge River Valley is a 'must feel' – feel nature all around you; feel the sense of community and feel yourself – learning, exploring, connecting.

See Route 1 and 2 for more details.

TOP THINGS TO DO



- 🏄 Paddleboard on Gun Lake at dawn
- 📖 Book The Bralorne Adventure Lodge for you and up to nine friends and access some of the best snowmobile, dirt bike and ATV / Side by Side terrain imaginable right from the front door
- 🏍 Ride your quad to Mud Lakes and catch your lunch
- 🐎 Take a guided multi-night horseback trip into South Chilcotin Park with Chilcotin Holidays
- ✈ Floatplane into Spruce Lake with mountain bikes aboard and experience a multi-night hut-to-hut alpine tour with Tyax Adventures
- 🍽 Enjoy an exquisite meal on the deck of Tyax Lodge and relax in your well appointed room before heading off to a spa treatment

- 🏠 Learn about the history of gold mining over at the Haylmore Heritage Site, dress up as a miner and try your hand at panning for gold
- 🎨 Browse for local arts and crafts at the Haylmore Heritage Site in Gold Bridge
- 🚁 Get your powder face shots and unlimited vertical with a helicopter dedicated to your group with Tyax Lodge & Heliskiing
- 🛼 Skate on a frozen lake and join the Winterfest fun on Family Day in British Columbia
- 🏛 Live the stories of the Bridge River Valley - visit the Bralorne Pioneer Museum





HISTORY

There's gold in them thar hills!

In the late 1800's gold prospectors travelled upstream from the Fraser River searching for the "mother lode" blazing a network of trails throughout the mountains.

Gold was discovered in the Bridge River Valley in the mid 1880's and soon after the discovery, multiple town sites were created. Several of these town sites are still in evidence today and include the existing communities of Bralorne and Gold Bridge, along with many abandoned towns in the valley.



Historical landmarks are plentiful in the valley. Serious history buffs, geocachers or families looking for an adventure back in time will find ghost towns, historical buildings and fascinating abandoned mine sites to explore. Check out [geocaching.com](https://www.geocaching.com) for nearby caches. Find your own gold at the Haylmore Heritage Site, former home of Will Haylmore, open May to September offering half day tours, gold panning and local arts and crafts at the Rockwall Gallery.

Information gathered from: "The Great Years" Lewis Green



BRALORNE

This small community hosts a population of 60. Resting at 1,021 m (3,350 ft) at the base of Mount Ferguson, which stretches up to 2,594 m (8,510 ft), this is the highest community of the Valley. Summer hiking and mountain biking experiences are world-class. The winter season sees plenty of opportunities for sledding with hundreds of old mining trails and roads that turn into fun multi-use routes in the summer. For a taste of history, check out the Bralorne Museum, church and abandoned mine sites and ghost towns. Don't forget to enjoy a cold beverage at the pub in town and share stories with the locals!



GOLD BRIDGE

Thanks to the success of the neighbouring Bralorne Pioneer Mine, the community of Gold Bridge flourished in the 1920s. Now home to a small community of residents, it offers accommodation, groceries/hardware/BC liquor store, tire repair and fuel to visitors against a stunning backdrop of mountain peaks and rushing rivers. Outdoor enthusiasts come to the rugged mountain landscapes of Gold Bridge to pursue breathtaking glacial snowmobiling, rockhounding and sensational heli-skiing. There's even a 9-hole golf course! You can also explore ghost towns and abandoned mine sites in the area or pan for gold at the Haylmore Heritage Site.





GUN LAKE

Gun Lake is a sparkling body of water that rests at the base of Mount Penrose, a 2,627 m (8,618 ft) peak. The lake and its surrounding region create a wealth of outdoor recreation opportunities. A series of trails begin at the scenic lake's north end and continue across to the Plateau Ponds. Gun Lake is popular for boating and angling and can be enjoyed from a number of overnight accommodation options. Winter visitors can join the fun of the annual Winterfest activities.



TYAUGHTON LAKE

The gorgeous Tyaughton Lake area encompasses a region at the foot of the South Chilcotin Mountains. This is a backcountry adventurer's dream, with vast hiking and biking trail networks taking you to Spruce Lake, Cinnabar Ridge, Taylor Basin, Mud Lakes and the Shulaps Range. The surrounding areas provide ample opportunity for fishing, boating, swimming, horseback riding, snowmobiling, ice skating, snowshoeing, cross-country skiing and heli-skiing. There are a number of resorts, backcountry outfitters and guided tours available. Wilderness Training Programs are also available.

MARSHALL LAKE

Marshall Lake is remote and completely unplugged – a true escape with great horseback riding, hiking and quad/dual sport trails. Please check maps and respect non-motorized zones.



4X4 ROADS & TRAILS

The Bridge River Valley is a dual sport, quad and side-by-side playground. The adventure begins along one of several routes into the Valley that offer spectacular mountain scenery while testing your driving skills. Once you arrive, your sense of adventure and your fuel supply are the only things that will set your boundaries. The area has an abundance of trails and roads that have been developed from the gold rush days and more recently from the mining, forestry and independent power industries. Please respect signage indicating non-motorized zones.



HIKING

The valley is home to some of the most spectacular mountain ranges in the world. Massive mountains and tumbling glaciers offer some serious mountaineering routes for the more experienced. Friendly ridges and flower filled meadows take the less experienced hiker on breathtaking routes used by mountain goats and grizzly bears.

Float plane drops are also available for groups to do one-way hikes out of the alpine, as well as fully guided tours.

Popular mountains to climb include Mt Truax and Mt Fergusson, which tower over Bralorne. Other great climbs include Sunshine Mountain and Green Mountain off the Hurley Forest Service Road.

Taylor Basin and South Chilcotin Mountains Provincial Park areas offer a large selection of trails and destinations for every level of hiking ability.



MOUNTAIN BIKING

The early settlers blazed a trail network throughout the valley and into the alpine leading to various areas for gold panning and settlement. Today, mountain bikers can follow these world class, high alpine, mostly flowy single-track trails into the backcountry to find their own treasures: lakes, streams, glaciers, old growth forests, wildlife and meadows filled with wildflowers.

A large portion of the valley's backyard is protected wilderness. South Chilcotin Mountains Provincial Park, home to classic rides featured in biking magazines makes this a definite "bucket list" trip for any avid mountain biker.

Valley trails outside the park are not to be overlooked, whether you are searching for a family activity for an hour or a day of riding, the valley trail network can provide both.

Epic multi-day rides can be done venturing further into Big Creek Park and towards Taseko Lake. Float plane drops, horse transporter services and guides are also available to help get your group to explore further out into the wilderness.

There are a lifetime of trails to explore around Gold Bridge, Bralorne and the Bridge River Valley. Visit trailforks.com for more detailed trail information.



Don't be surprised to see free range horses in the valley by the river or a cowboy riding along the side of the road or on a trail that you are exploring.

Horses and donkeys opened up this area and as a result there are endless trails to explore on horseback. Whether you are looking for day riding or venturing on a multi-day trip to the backcountry with pack horses, this is probably the best way to experience the Bridge River Valley and South Chilcotins. Bring your own horses or join one of our exceptional local outfitters to create your adventure.

Do you seek a vacation with a

HIGHER PURPOSE?

Experience personal growth and evolvement by reconnecting with yourself and nature through a unique wilderness stewardship adventure!

Talk to our wilderness trip experts about the details at

+1 250 238 2274

adventures@chilcotinholidays.com
chilcotinholidays.com

Chilcotin Holidays
Reconnect with nature and self



THE BRALORNE TIME TRAVELER

Story written by Cara DeMare



When you type “Bralorne Time Traveler” into Google, a mysterious photo pops up that has millions of people questioning if time travel really does exist. Strange as it may sound, many claim that a time traveler was caught in a 1941 photo published on a virtual exhibit by the Bralorne-Pioneer Museum.

By just glancing at the photo, a tall man stands out wearing what seems to be modern sunglasses, a printed t-shirt, and he even seems to be holding a modern day camera. It is easy to see why so many speculate that this man is from the future, as he looks so distinctively different from those around him.

This photo went viral in 2010 after the photo was posted on digg.com. Hundreds of emails poured into the museum with messages such as “Why is there a time traveler in this photo?”, “One of your pictures has been tampered with”, and “I believe we have caught a time traveler”.

News stations from New Zealand, Brazil, and the USA all had segments covering the photo. A Russian news team even came to Bralorne, BC to investigate the photo’s origins. The crew found the original photo and even discovered a possible name to identify the Bralorne Time Traveler.

Several people are so enamored with the Bralorne Time Traveler that they have wanted to buy the rights to the photo to sell and make a fortune off of it. One man has even claimed to be the time traveler himself!

This photo is quite the phenomenon and is one of the most discussed time traveler stories in the world. So could this really be a time traveler caught on camera? Or perhaps it could just be that he was not dressed for the occasion?

Do you believe this man is a time traveler?



FISHING

The Bridge River Valley has multiple lakes and rivers and no shortage of fish.

Great angling can be found on almost all the lakes and rivers in the valley. Pearson Pond, Mowson Pond, Tyaughton Lake, Plateau Ponds, Lajoie Lake and Kingdom Lakes are all perfect fishing lakes with Rainbow Trout, Eastern Brooke Trout, Kokanee and Bull Trout. The fish weigh in at about 1 - 3 lbs on average, however fish 10 - 18 lbs have been landed as well.

Float plane and guided fishing trips are also available.



WILDLIFE & WILDFLOWERS

The Bridge River Valley teems with life. Grab your camera and go exploring. You are sure to see some amazing species.

Local wildlife includes:

Mule Deer, White-Tailed Deer, Moose, Big Horn Mountain Sheep, Black Bear, Grizzly Bear, Wolf, Coyote, Cougar, Bobcat, Lynx, Wolverines, Snowshoe Hare.

Bird lovers can spot:

Grouse: Dusky (Blue), Ruffed & Spruce; Ptarmigan, Chukar Partridge, Gray Partridge, Pheasant, Mourning Doves, Coots, Ducks, Geese, Falcons, Eagles, Great Herons, and Owls.

STOP INVASIVE SPECIES IN YOUR TRACKS.



Help Prevent the Spread of Invasive Plants and Animals.

- Arrive with clean gear.
- Stay on the trails.
- Use local or weed-free hay.
Burn local or certified firewood.
- Before leaving, remove mud & seeds.
- Clean, Drain, Dry your boat & gear.



PlayCleanGo.org



SWIMMING & BOATING

The lakes of Bridge River Valley provide plenty of great opportunity for water sports. Gun Lake is approximately 7 km long and has a public launch area that allows for motorized boats on the lake. All the lakes in the Bridge River Valley area are great locations to canoe, kayak or stand up paddleboard.

Gun Lake and Tyaughton Lake are amongst the cleanest lakes in the province and provide exceptional swimming conditions in the summer.

bridgerivervalley.ca

AREA MAP





HELI-SKIING & CATSKIING TOURS

Tyax Lodge & Heliskiing and Backcountry Snowcats operating out of the Bridge River Valley have the Chilcotin Mountain Range as their playground. Experience the untracked powder for which British Columbia is famous, world-class terrain and breathtaking vistas.

Tyax Lodge & Heliskiing is one of the world's most exciting heli-skiing and snowboarding experiences. Fly with one group per helicopter and unlimited vertical - that means no waiting as your own group sets the pace.

Backcountry Snowcats offers a remote catskiing experience where the deep, dry snow of the South Chilcotin Mountains will spoil you forever. 15,000 acres of varied terrain that is accessible in all weather conditions.

Helicopter transfers from Whistler are available from Tyax Lodge & Heliskiing (30min) and from Vancouver (1 hour) making Tyax Lodge & Heliskiing one of the most accessible backcountry heli-ski operations in the province.



SNOWMOBILING

Bridge River Valley is a snowmobiling mecca. Bralorne is Sled Headquarters and many areas can be accessed directly from town. The East Hurley, Noel Valley and Kingdom Lake FSR provide unlimited sledding options right from your door. All destinations offer spectacular views and riding experiences.

Tyaughton Lake area has great sledding in the Taylor Basin zone where there is a historic mining cabin. Slim Creek is unquestionably the biggest area around for sledding, but be warned, there is 35 km of road riding just to access the trailhead. Extra gas is a must!

There are hazards, including avalanches, crevasses, creek crossings and white outs. Know your limitations before heading out and always inquire locally about trail and weather conditions; both can change quickly. Avalanche training, extra gas, clothing and food should be standard equipment for anyone venturing into the mountains.



THE MOUNTAINS ARE CALLING

THE CABINS AT TYAX
TYAXCABINS@GMAIL.COM

2 BEAUTIFUL LOG CABINS FOR RENT
VRBO.COM/1006177# & VRBO.COM/1004886



HAVE A GOLDEN DAY! (250)238-2343

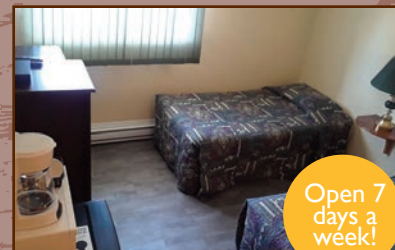
NEWLY RENOVATED!

Rooms with two single beds or one queen bed available.

Newly renovated rooms includes:

- Fridge
- Internet
- Coffeemaker
- Satellite
- Microwave

Full restaurant and bar open for breakfast, lunch & dinner.



Open 7
days a
week!

WWW.GOLDBRIDGEHOTELANDPUB.COM
FB @GoldbridgeHotelCafeBar



SKI TOURING

Some of the greatest and most rarely visited backcountry ski terrain in Southwestern BC lies within the areas surrounding the Bridge River Valley. Glaciers, high alpine meadows and glades are all part of the experience dependent on the route. Difficult ascents are rewarded with long descents and spectacular views.

Much of the ski touring area is extremely remote and only the most experienced should attempt without a guide. There are hazards, including avalanches, crevasses, creek crossings and white outs. Know your limitations before heading out and always inquire locally about terrain and weather conditions; both can change quickly. Avalanche training, sufficient clothing and food should be standard equipment for anyone in the mountains.



WINTER ACTIVITIES

Winter is more than snowmobiling and backcountry skiing in the Bridge River Valley. Some other fun activities to engage in:

Ice Skating on a frozen lake can't be beat when conditions permit. Residents build and maintain rinks on most of the lakes.

Ice Fishing is a truly Canadian experience. Bridge River Valley's lakes have great fishing winter and summer.

Cross Country Skiing on the frozen lakes is fun and relatively easy. Looking to toughen the task? There are plenty of trails that will test every level of experience.

Snowshoeing is a wonderful way to experience travel like the first explorers and a great way to see the gorgeous sights.

TOURISM INFO BOOTH

Gateway Kiosks have all the information you will need while enroute to Bridge River Valley. Find them at the Yalakom Junction, Road 40 at Tyaughton Lake and Gold Bridge Junctions and on the Hurley at the East Hurley Junction.

For more detailed information, visit us at the Tourism Info Booth located at the Haylmore Heritage Site in Gold Bridge.

Open:
 May 20 to September 30 Mondays, Fridays, Sundays 12pm-4pm
 Thursdays, Saturdays 10am-4pm
 October to May 19 (Community Resource Building 104 Haylmore, Gold Bridge)
 Mondays & Thursdays 10am-3pm

ACCOMMODATION

CHILCOTIN HOLIDAYS GUEST RANCH

Phone: 250-238-2274
 Location: Gun Creek Road, Gold Bridge, BC
 Web: www.chilcotinholidays.com

GOLD DUST MOTEL

Phone: 250-238-2423
 Location: 88 Fergusson Road, Gold Bridge, BC

GOLD BRIDGE HOTEL

Phone: 250-238-2343
 Location: 6 Fergusson Ave, Gold Bridge, BC
 Web: www.facebook.com/GoldbridgeHotelCafeBar

ACCOMMODATION

THE CABINS ON TYAUGHTON LAKE

Phone: 604.313.0906
 Location: Tyaughton Lake, BC
 Web: www.tyaughtonlakecabins.com /FB: The Cabins At Tyax

BRALORNE MINES MOTEL

Phone: 778-866-5519
 Location: 3600 Pioneer Hwy Rd, Bralorne, BC
 Web: www.facebook.com/bralorneminesmotel

BRALORNE ADVENTURE LODGE

Phone: 250-238-2316
 Location: 128 Lorne St, Bralorne, BC
 Web: www.bralorneadventurelodge.com

TYAX LODGE & HELISKIING

Toll Free: 1-877-918-TYAX (8929)
 Phone: 250-238-2221 Fax: 250-238-2528
 Location: 1 Tyaughton Lake Rd, Tyaughton Lake, BC
 Web: www.tyax.com



CAMPING

GUN CREEK HYDRO SITE - GOLD BRIDGE

Located approximately 8.5 km northeast of Gold Bridge and 91 km Northwest of Lillooet, on Carpenter Lake Reservoir.

FRIBERG FOREST SERVICE CAMPGROUND - TYAUGHTON LAKE

Located on the western shore of Tyaughton Lake. From Goldbridge proceed Northeast along Highway 40. Turn left onto Tyaughton Lake Road. There is a sign for the Friburg Recreation Site on your right. Take the access road to the main camping areas.

TYAX LODGE CAMPSITE - TYAUGHTON LAKE

1 Tyaughton Lake Rd, Gold Bridge

KINGDOM LAKE FOREST SERVICE CAMPGROUND - BRALORNE

In Bralorne, take the Kingdom Lake Forest Service Road. Turn left at the campsite sign and follow this road down into the campsite.

GUN LAKE FOREST SERVICE CAMPGROUND - GUN LAKE

Access is via Gun Lake Road and then Gun Lake Road West.

GWENYTH LAKE FOREST SERVICE CAMPGROUND - HURLEY FSR

Gwyneth Lake Park is West of Lillooet and North of Pemberton. The campsite is accessed from the Hurley Forest Service Road.

MARSHALL LAKE CAMPSITES

Located north of Carpenter Lake. Proceed 72 km west along Highway 40 until you see Marshall Lake Road North and turn right. Follow this road until 1m 89. Then turn left and follow for 1km until you see the site.

GROCERY / FOOD

VALLEY HARDWARE AND GROCERY

Phone: 250-238-2252

Location: 14869 Pioneer Hwy, Gold Bridge, BC

Hours of Operation:

Winter Hours:

Monday to Saturday 1:30pm to 5:30pm - Closed Sundays & Holidays.

Summer Hours (July & August):

Monday to Saturday 10am to 12pm and 1:00pm to 5:30pm.

Sundays - Noon to 4:00 pm.

Holiday Mondays 10am to 2pm

Closed during freight deliveries on Mondays and Thursdays.

GOLD BRIDGE HOTEL & RESTAURANT

Phone: 250-238-2343

Location: 6 Fergusson Ave, Gold Bridge, BC

Web: www.facebook.com/GoldbridgeHotelCafeBar

BRALORNE PUB

Phone: 1-778-866-5519

Location: 3900 Pioneer Rd, Bralorne, BC

TYAX LODGE & HELISKIING

Toll Free: 1-887-918-TYAX (8929)

Phone: 250-238-2221 Fax: 250-238-2528

Location: 1 Tyaughton Lake Rd, Tyaughton Lake, BC

Web: www.tyax.com



BACKCOUNTRY OPERATORS

BACKCOUNTRY SNOWCATS

Phone: 604-894-7669

Location: Hurley Pass, BC

Web: www.snowcats.ca

BLACKCOMB HELICOPTERS

Toll Free: 1-800-330-4354

Location: Gun Lake Air Strip, BC

Web: www.blackcombhelicopters.com

CHILCOTIN HOLIDAYS GUEST RANCH

Phone/Fax: 250-238-2274

Location: Gun Creek Road, BC

Web: www.chilcotinolidays.com

TYAX LODGE & HELISKIING

Toll Free: 1-887-918-TYAX (8929)

Phone: 250-238-2221 Fax: 250-238-2528

Location: 1 Tyaughton Lake Rd, Tyaughton Lake, BC

Web: www.tyax.com

TYAX ADVENTURES

Phone: Toll-free: 1-888-892-9288 / 250-238-0177

Location: Tyax Adventures Activity Desk for Float Plane, MTB and

Check in – 946 Tyaughton Lake Road, Gold Bridge, BC

Web: www.tyaxadventures.com

WHITECAP ALPINE

Phone: 604-862-9757

Toll Free: 1-888-863-9757

Location: McGillivray Pass, BC

Web: www.whitecapalpine.ca

TYAX

Adventures

- ✓ Mountain Biking
- ✓ Hiking
- ✓ Float-Plane Charters
- ✓ Flight-Seeing
- ✓ Backcountry Accommodations

tyaxadventures.com • 888-892-9288 • fun@tyaxadventures.com
946 Tyaughton Lake Road

DAVE SHARPE
604-902-2779

RE/MAX SEA TO SKY REAL ESTATE

604-932-2300

MYSEATOSKY.COM



THE
RE/MAX
COLLECTION



RECREATION

BRIDGE RIVER VALLEY GOLF COURSE

Location: West Gun Lake Rd, Gold Bridge, BC

Website: goldbridgecommunityclub.ca

BRALORNE BALL DIAMOND

Phone: 250-238-2534 (office)

Location: 100 Lorne Ave, Bralorne, BC

Web: www.brvc.ca/services/bralorne-ball-field/

BRALORNE FIRE HALL ICE RINK

Phone: 250-238-2424

Location: 3155 Pioneer Hwy, Bralorne, BC

BRIDGE RIVER SHOOTING RANGE

Contact: brvrodandgunclub@yahoo.com
for membership information.

Location: La Joie Quarry off Saddle Road

SUNSHINE MOUNTAIN AND CABIN - BRALORNE RECREATION AREA

Phone: 250-238-2534

Location: Sunshine Mountain, Bralorne, BC

Web: www.brvc.ca/services/sunshine-mountain

EVENTS

BRALORNE BALL TOURNAMENT

Phone: 250-238-2534

Location: 100 Lorne Ave, Bralorne, BC

Web: www.bridgerivervalley.ca

The Bralorne Ball Tournament is an annual event that is a local tradition in Bralorne for almost 30 years. The tournament is composed of seven out of town teams and the Bralorne team. The out of town teams usually camp in the area and are given free camping on the Bralorne Pioneer Museum grounds.

CANADA DAY CELEBRATIONS July 1

Phone: 250-238-2534

Bridge River Valley Community Association

Web: www.bridgerivervalley.ca

Canada Day in the Bridge River Valley is a fun family event. Join the parade through town and enjoy a BBQ celebration on the Gold Bridge Community School field with a huge Canada Cake and singing of Oh Canada!

WINTERFEST

Phone: 250-238-2534

Bridge River Valley Community Association

Web: www.bridgerivervalley.ca/winterfest



Winterfest is a celebration of winter Bridge River Valley style! Outdoor winter fun for the whole family held annually on the BC February long weekend. Activities include outdoor hockey, curling, ice fishing derby, hockey shootout and a vintage snowmobile show and shine. This event is free to attend, thanks to the generous donations from our sponsors and the volunteers in the community who work hard to make it all happen.



GAS & AUTO REPAIR

PIONEER PAUL'S TIRE REPAIR

Phone: 250-238-2584

Location: 51 Fergusson Ave, Gold Bridge BC

COOL CREEK GAS

Open 24/7 debit and credit cards only

Phone: 1-800-374-0614

Location: 15061 Pioneer Highway, Gold Bridge

TOP GUN TOWING

Phone: 250-238-2442

Location: Gun Creek Road, Gold Bridge BC

LOCAL SERVICES & ATTRACTIONS

For local information online, please visit: www.bridgerivervalley.ca

GOLD BRIDGE LIBRARY

Phone: 250-238-2521

Location: 40 Hurley Road, Gold Bridge, BC

Web: www.lillooet.bclibrary.ca

GOLD BRIDGE POST OFFICE

Phone: 250-238-2628 Toll Free: 1-800-267-1177

Location: 40 Hurley Road, Gold Bridge, BC

Outgoing mail must be in by 11:30 am

INTERNET ACCESS

Free internet access is available at the **Gold Bridge Library and the Haylmore Site. The Community Resource Office offers free internet access and business services for a small fee.**

Telephones are also available at the Gold Bridge Hotel and the Community Resource Building.

LOCAL SERVICES & ATTRACTIONS

BRALORNE COMMUNITY CHURCH

Phone: 250-238-2534

Location: Corner of Whiting/Hawkes Avenue, Bralorne, BC

Web: www.bralornechurch.ca

BRALORNE-PIONEER MUSEUM

Phone: 250-238-2349

Location: 3767 Lillooet-Pioneer Rd. 40

Web: www.facebook.com/bralorpioneeremuseum

BRIDGE RIVER VALLEY CEMETERY

Phone: 250-238-2534

Location: Bralorne Ave, Gold Bridge, BC

DAVE SHARPE

REMAX Sea to Sky Whistler

Phone: 250-238-2679

Email: daves@myseatosky.com

HAYLMORE HERITAGE SITE

Phone: 250-238-2534

Location: Haylmore Lane, Gold Bridge, BC

WASTE MANAGEMENT

GOLD BRIDGE TRANSFER STATION

Location: Gun Lake Road, Gun Lake, BC

Hours of Operation:

Winter Hours – Sunday & Thursday 10am – 4pm
(Labour Day to the May Long Weekend)

Summer Hours – Sunday, Monday, & Thursday 10am – 4pm
(May Long Weekend to Labour Day)

MEDICAL & EMERGENCY SERVICES

BC AMBULANCE SERVICE

CALL 911 IN CASE OF AN EMERGENCY

Contact: BC Ambulance Service

Phone: 911

Location: 40 Hurley Road, Gold Bridge BC

BRALORNE VOLUNTEER FIRE DEPARTMENT

Contact: Bralorne Volunteer Fire Department Society

Phone: 250-238-2424

Location: 3155 Pioneer Hwy, Bralorne, BC

GUN LAKE FIRE PROTECTION SOCIETY

Our purpose is to educate, train and support the residents of Gun Lake in Fire Protection and in the event of a wildfire.

If you see a fire, your first call is to 1-800-663-5555, then call GLFPS at 250-238-2560. You can contact us on Facebook at www.facebook.com/GLFPS or at www.gunlakefire.ca or gunlakefire@gmail.com

LAW ENFORCEMENT: RCMP

The RCMP from the Southeast District Lillooet Detachment provides law enforcement services to the Bridge River Valley.

Contact: RCMP, Southeast District Lillooet Detachment

Office: 250-256-4244

Fax: 250-256-4302

Location: 317 Main St, Lillooet, BC

MEDICAL & EMERGENCY SERVICES

SEARCH & RESCUE

The RCMP from the Southeast District Lillooet Detachment conducts and organizes search and rescue missions in the Bridge River Valley with the assistance of local resources and businesses, as well as from Federal Fisheries, Lillooet Rescue, PEP & Pemberton Search and Rescue.





Contact: RCMP, Southeast District Lillooet Detachment

Office: 250-256-4244

Fax: 250-256-4302

Location: 317 Main St, Lillooet, BC



-  Pan for gold and gems
-  Take home a local artisan treasure
-  Take a guided tour and explore
-  Tourist Information Booth

HOURS OF OPERATION:

May 20 to September 30
Closed Tuesdays & Wednesdays
10-4 Thursdays and Saturdays
12-4 Fridays, Sundays and Mondays

HAYLMORE LANE, GOLD BRIDGE

STAY IN TOUCH!

Web: bridgerivervalley.ca
Facebook: facebook.com/haylmore
Twitter: @bridgerivervalley

**CARIBOO
CHILCOTIN
COAST**



STAY IN TOUCH!

WEB: www.bridgerivervalley.ca

FACEBOOK: www.facebook.com/southchilcotin

INSTAGRAM: @bridgerivervalley

TWITTER: @BRIDGERIVERVALY

YOUTUBE: www.youtube.com/BridgeRiverValley

**CARIBOO
CHILCOTIN
COAST**

